

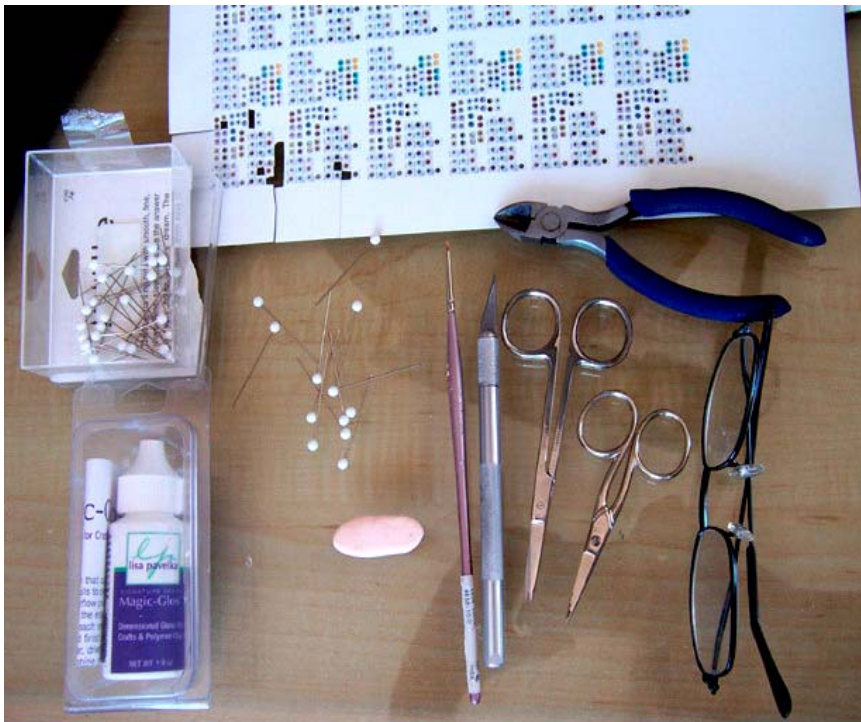
Pgm
SCULPTING



Eye Tutorial by Phyllis Morrow Pgm Sculpting



<http://pgmsculpting.com>



TOOLS NEEDED:

- Iris Prints
- White Head Straight Pins
- Magic-Glos UV Adhesive (or equivalent UV adhesive)
- 10/0 detail brush
- Exacto Knife
- Scissors
- Wire Cutters
- Reading Glasses (optional)
- UV Light Box (optional)

UV Adhesive will also cure with direct sunlight

IRIS PRINTS: Here I have printed out iris's on a sheet of photo paper. I set the dpi at 1200 to get as clear a print as I could of these tiny buggers. They are the size of a 3mm eye. Please remember you can also paint the iris on the pin head if you wish. I use 3mm eyes on sculpts that are 8-12 inches in height. This is for more realistic eye size with the head size. Also note that this sheet of iris's is the results of many, many hours of work finding the iris's and getting the quality to where I was happy with them, then cutting and pasting to this layout and getting the correct size to print.

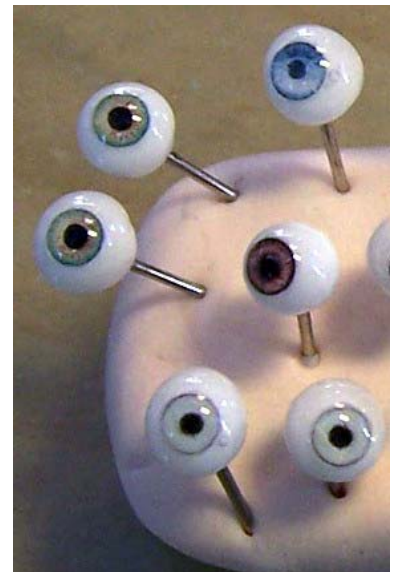


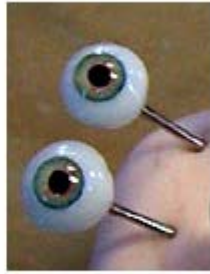
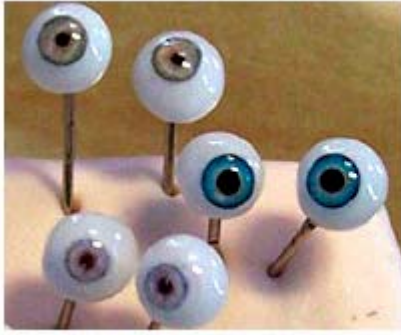
STRAIGHT PINS: I went to the quilting store and found white headed straight pins. The head is the size of a 3mm bead...just perfect! These bead heads are plastic so they can be cut with a knife. If you find glass headed pins, you can sand a smooth surface with a dremel tool of some sort.

MAGIC-GLOS: Just Google it and you will find a few places that sell it. I bought mine from Lisa Pavelka's website. I also bought my UV Light box there. The Magic-Glos is a plastic gloss that hardens either in direct sunlight or under a UV light. I have done it both ways, but since I work a lot at night, the UV light is great.

After it hardens or cures, you can bake it in the oven. I have baked my eyes up to 6 times on a sculpt at temperatures up to 265 degrees. I've never had it turn yellow.

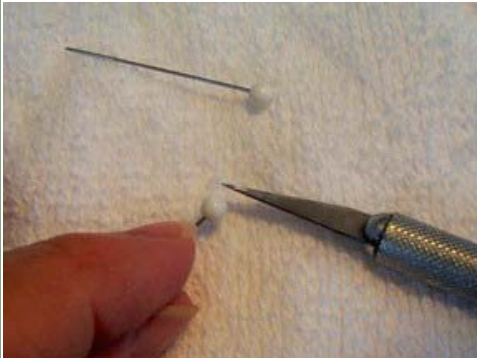
This little bottle goes a long way. I use it only for my eyes, so it will last a while. Be sure to keep it in a dark place when storing. I never leave mine sitting out for a long period of time.





Here is a close up of the eyes that I made in this tutorial.

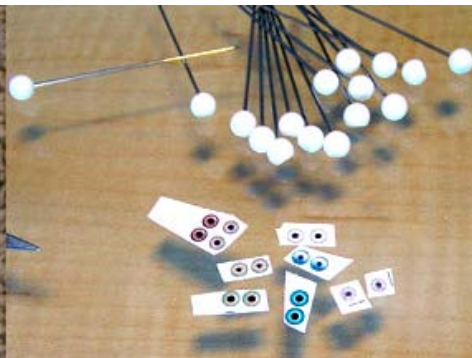
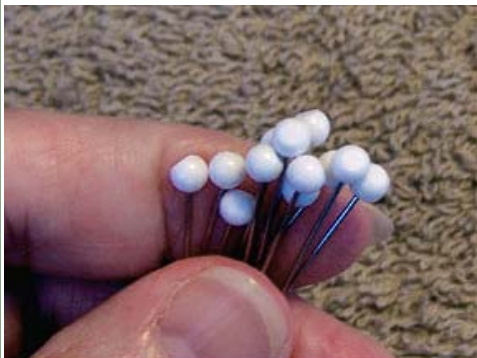
Remember, these are 3mm.



Here you will cut a flat surface about the size of the iris you will be using.

The flat cut should look like this.

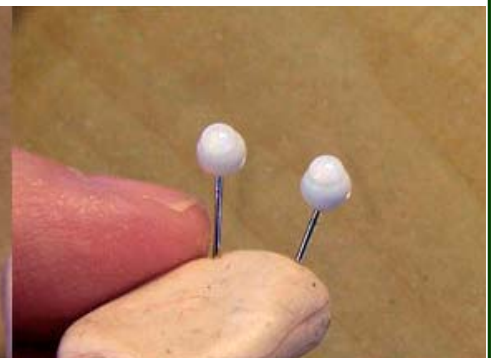
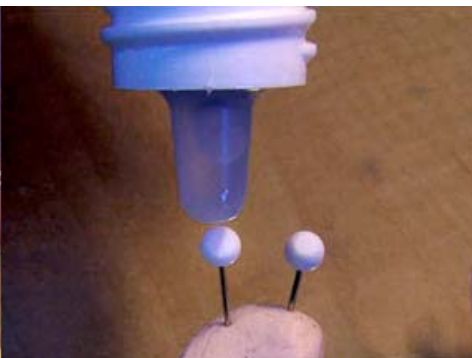
Here is a side view. Please note that these are pretty hard to cut.



Cut enough for at least 8 or more pairs of eyes.

Next, I pick and cut out the iris's I like or think I may use.

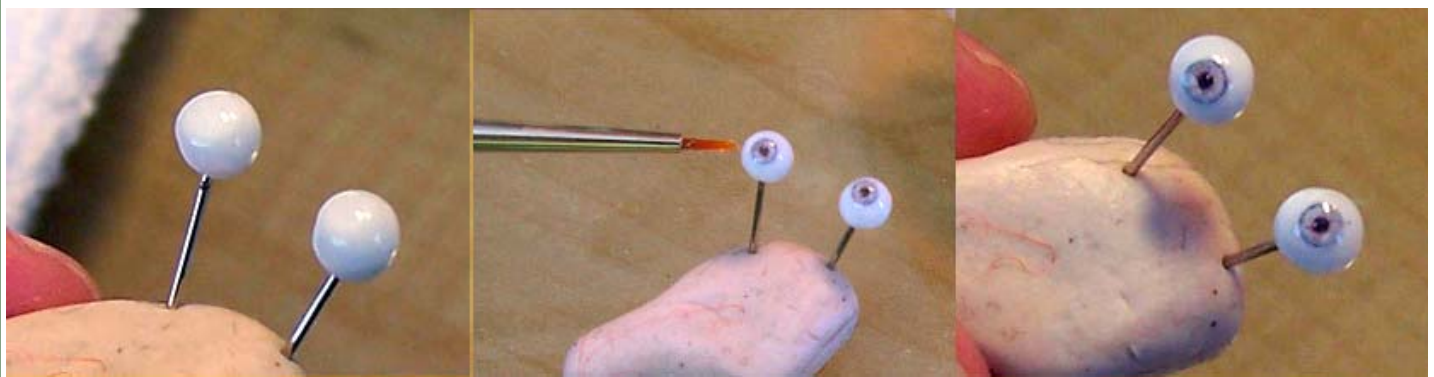
I cut the iris's out. You will need a lot of patience with this because they are very tiny. Don't breathe too heavily or they will blow away!



Next, you will need to cut the pin wires shorter if you are using the UV light as the needles are too tall to fit. Stick these into a piece of soft clay. The clay is used to hold the eyes upright during curing.

I apply a small dot of the gloss to the eye. I work with two pair of eyes at a time.

The eyes should look like this.



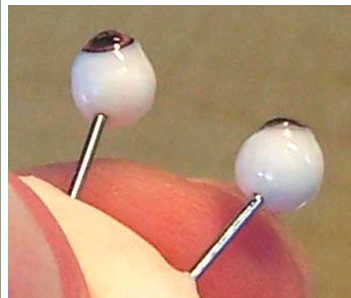
I brush the gloss all over the eyeball with a paint brush. While this is still wet, take the same brush to pick up the iris. Since the brush has gloss on it, you can easily pick up the iris.

With the iris on the brush, place it on the wet, flattened surface. Press down to set the iris as close to the flat spot as possible. Once set, brush more gloss over the iris to hold it in place.

Add one more dot of gloss on the iris and smooth with a brush. The iris will slip and slide, so it make take a bit to get them in place. Now place them under the UV light or in direct sunlight outside.

Make sure the iris's are facing straight up so the gloss does not run and gloop to one side of the eye as it cures.

If there is too much of a bump on the iris or it looks uneven, I will add another thin layer of gloss all over the eye to smooth into a more rounded shape and cure again.



I have added another dot of gloss on top to form the lens (cornea). I then put it back under the light and cure again for about 10 to 15 minutes.

